



Certificate of Analysis

Powered by Confident Cannabis
1 of 2

Farm to Farma Inc.

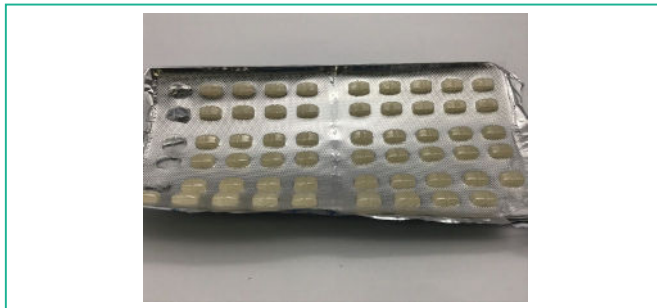
1005 Terminal Way, Suite 140
Reno, NV 89502
drkent@trokie.com
(626) 646-3227
Lic. #

Sample: 2301TSF0130.0677

Strain: Hemp
Lot #: Full Spec Hemp Ext 20mg 112301;
Sample Received: 01/13/2023; Report Generated: 01/19/2023

UD Trokie 20mg CBD Full Spectrum

Ingestible, Orally-Dissolving Product, CO2
Harvest Process Lot: ; METRC Batch: ; METRC Sample:



The photo on this report is of a sample collected by the lab and may vary from the final packaging

Safety

| | | |
|---------------------------|-----------------------------|-------------------------------|
| Pass Pesticides | Pass Microbials | Pass Mycotoxins |
| Pass Solvents | Pass Heavy Metals | Pass Foreign Matter |

Cannabinoids

| | | |
|---------------------------------------|---|------------------------------------|
| <LOQ Total Potential THC | 19.63 mg/unit Total Potential CBD | <LOQ test Homogeneity |
|---------------------------------------|---|------------------------------------|

| Analyte | LOQ mg/unit | Result mg/unit | Result mg/g |
|--------------|----------------|-------------------|----------------|
| THCa | 0.02 | <LOQ | <LOQ |
| Δ9-THC | 0.02 | <LOQ | <LOQ |
| Δ8-THC | 0.02 | <LOQ | <LOQ |
| CBD | 0.02 | 19.63 | 98.14 |
| CBDa | 0.02 | <LOQ | <LOQ |
| CBC | 0.02 | 0.09 | 0.43 |
| CBG | 0.02 | <LOQ | <LOQ |
| CBN | 0.02 | <LOQ | <LOQ |
| THCV | 0.02 | <LOQ | <LOQ |
| CBGa | 0.02 | <LOQ | <LOQ |
| Total | | | 98.57 |

1 Unit = 1 unit dose, 0.2g

Terpenes

| Analyte | LOQ % | Result % | Result mg/g |
|---------------------|----------|-------------|----------------|
| α-Bisabolol | 0.05 | <LOQ | <LOQ |
| α-Humulene | 0.05 | <LOQ | <LOQ |
| α-Pinene | 0.05 | <LOQ | <LOQ |
| β-Caryophyllene | 0.05 | <LOQ | <LOQ |
| β-Myrcene | 0.05 | <LOQ | <LOQ |
| β-Pinene | 0.05 | <LOQ | <LOQ |
| Caryophyllene Oxide | 0.05 | <LOQ | <LOQ |
| δ-Limonene | 0.05 | <LOQ | <LOQ |
| Linalool | 0.05 | <LOQ | <LOQ |
| Ocimene | 0.05 | <LOQ | <LOQ |
| Terpinolene | 0.05 | <LOQ | <LOQ |
| trans-Nerolidol | 0.05 | <LOQ | <LOQ |
| Total | | 0.00 | 0 |

10 Greg St
Sparks, NV
(844) 374-5227
www.374labs.com



Dr. Jeff Angermann
Scientific Director

Confident Cannabis
All Rights Reserved
support@confidentcannabis.com
(866) 506-5866
www.confidentcannabis.com



Unless otherwise stated all quality control samples performed within specifications established by the Laboratory. This product has been tested by 374 Labs, LLC (MME# 03754325902079441647) using valid testing methodologies and a quality system as required by State of Nevada. Pass/Fail results are based on criteria established by the State of Nevada under Title 56 NRS 678, NCCR 11. Values reported relate only to the product tested. 374 Labs makes no claims as to the efficacy, safety or other risks associated with any detected or non-detected levels of any compounds reported herein. This Certificate shall not be reproduced except in full, without the written approval of 374 Labs. Uncertainty information is available upon request. 374 Labs complies with ISO/IEC 17025 standards. Photo is of sample collected by the lab and may vary from final packaging. LOQ has been set to the Limit of Detection (LOD) / Method Detection Limit (MDL) for all endpoints.



Certificate of Analysis

Powered by Confident Cannabis
2 of 2

Farm to Farma Inc.

1005 Terminal Way, Suite 140
Reno, NV 89502
drkent@trokie.com
(626) 646-3227
Lic. #

Sample: 2301TSF0130.0677

Strain: Hemp
Lot #: Full Spec Hemp Ext 20mg 112301;
Sample Received: 01/13/2023; Report Generated: 01/19/2023

UD Trokie 20mg CBD Full Spectrum

Ingestible, Orally-Dissolving Product, CO2
Harvest Process Lot: ; METRC Batch: ; METRC Sample:



Pesticides

Pass

| Analyte | Result | LOQ | Limit | Status |
|-------------------------|--------|-------|-------|--------|
| | PPM | PPM | PPM | |
| Abamectin | <LOQ | 0.150 | 0.150 | Pass |
| Acequinocyl | <LOQ | 0.310 | 4.000 | Pass |
| Beta-Cyfluthrin | <LOQ | 0.600 | 2.000 | Pass |
| Bifenazate | <LOQ | 0.080 | 0.400 | Pass |
| Bifenthrin | <LOQ | 0.080 | 0.080 | Pass |
| Cyfluthrin | <LOQ | 0.600 | 2.000 | Pass |
| Cypermethrin | <LOQ | 0.310 | 0.310 | Pass |
| Daminozide | <LOQ | 0.150 | 0.080 | Pass |
| Dimethomorph | <LOQ | 0.080 | 2.000 | Pass |
| Etoxazole | <LOQ | 0.080 | 0.400 | Pass |
| Fenhexamid | <LOQ | 0.080 | 1.000 | Pass |
| Flonicamid | <LOQ | 0.080 | 1.000 | Pass |
| Fludioxonil | <LOQ | 0.080 | 0.500 | Pass |
| Imidacloprid | <LOQ | 0.080 | 0.500 | Pass |
| Myclobutanil | <LOQ | 0.080 | 0.400 | Pass |
| Pacllobutrazol | <LOQ | 0.080 | 0.080 | Pass |
| Piperonyl Butoxide | <LOQ | 0.080 | 3.000 | Pass |
| Plant Growth Regulators | <LOQ | | | Tested |
| Pyrethrins | <LOQ | 0.310 | 2.000 | Pass |
| Quintozene | <LOQ | 0.200 | 0.800 | Pass |
| Spinetoram | <LOQ | 0.080 | 1.000 | Pass |
| Spinosad | <LOQ | 0.080 | 1.000 | Pass |
| Spirotetramat | <LOQ | 0.080 | 1.000 | Pass |
| Thiamethoxam | <LOQ | 0.080 | 0.400 | Pass |
| Trifloxystrobin | <LOQ | 0.080 | 1.000 | Pass |

Microbials

Pass

| Analyte | Limit | LOQ | Result | Status |
|--------------------------|--------|-------|--------|--------|
| | CFU/g | CFU/g | CFU/g | |
| Total Aerobic | 100000 | 40 | <LOQ | Pass |
| Total Enterobacteriaceae | 1000 | 40 | <LOQ | Pass |
| Total Coliforms | 1000 | 40 | <LOQ | Pass |
| Pathogenic E. Coli | 1 | | <LOQ | Pass |
| Salmonella | 1 | | <LOQ | Pass |
| Total Yeast & Mold | 10000 | 40 | <LOQ | Pass |

Residual Solvents

Pass

| Analyte | Result | LOQ | Limit | Status |
|-----------|--------|-----|-------|--------|
| | PPM | PPM | PPM | |
| Butanes | <LOQ | 50 | 500 | Pass |
| Ethanol | <LOQ | 50 | | Tested |
| Heptanes | <LOQ | 50 | 500 | Pass |
| Hexanes | NR | 50 | | NT |
| Isobutane | <LOQ | 50 | 500 | Pass |
| Methanol | NR | 50 | | NT |
| Pentane | <LOQ | 50 | | Tested |
| Propane | <LOQ | 50 | 500 | Pass |

Heavy Metals

Pass

| Analyte | Result | LOQ | Limit | Status |
|---------|--------|-------|-------|--------|
| | PPM | PPM | PPM | |
| Arsenic | <LOQ | 0.260 | 2.000 | Pass |
| Cadmium | <LOQ | 0.260 | 0.820 | Pass |
| Lead | <LOQ | 0.260 | 1.200 | Pass |
| Mercury | <LOQ | 0.120 | 0.400 | Pass |

Mycotoxins

Pass

| Analyte | Result | LOQ | Limit | Status |
|------------------|--------|-------|-------|--------|
| | PPM | PPM | PPM | |
| Aflatoxins | <LOQ | 0.005 | 0.020 | Pass |
| B1 | <LOQ | 0.005 | | Tested |
| B2 | <LOQ | 0.005 | | Tested |
| G1 | <LOQ | 0.005 | | Tested |
| G2 | <LOQ | 0.005 | | Tested |
| Ochratoxin A | <LOQ | 0.015 | 0.020 | Pass |
| Total Mycotoxins | <LOQ | | 0.020 | Pass |

10 Greg St
Sparks, NV
(844) 374-5227
www.374labs.com



Dr. Jeff Angermann
Scientific Director

Confident Cannabis
All Rights Reserved
support@confidentcannabis.com
(866) 506-5866
www.confidentcannabis.com



Unless otherwise stated all quality control samples performed within specifications established by the Laboratory. This product has been tested by 374 Labs, LLC (MME# 03754325902079441647) using valid testing methodologies and a quality system as required by State of Nevada. Pass/Fail results are based on criteria established by the State of Nevada under Title 56 NRS 678, NCCR 11. Values reported relate only to the product tested. 374 Labs makes no claims as to the efficacy, safety or other risks associated with any detected or non-detected levels of any compounds reported herein. This Certificate shall not be reproduced except in full, without the written approval of 374 Labs. Uncertainty information is available upon request. 374 Labs complies with ISO/IEC 17025 standards. Photo is of sample collected by the lab and may vary from final packaging. LOQ has been set to the Limit of Detection (LOD) / Method Detection Limit (MDL) for all endpoints.